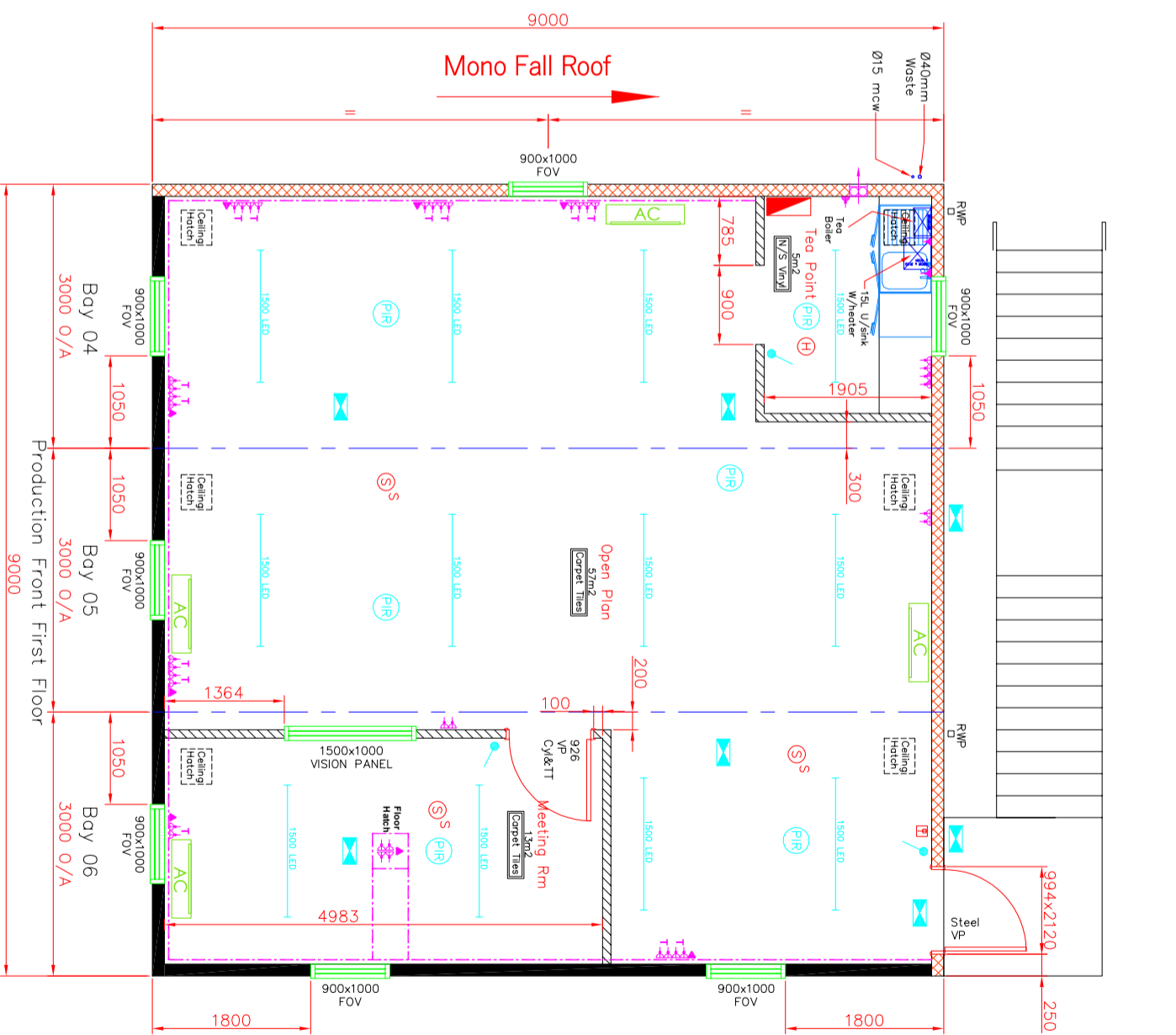
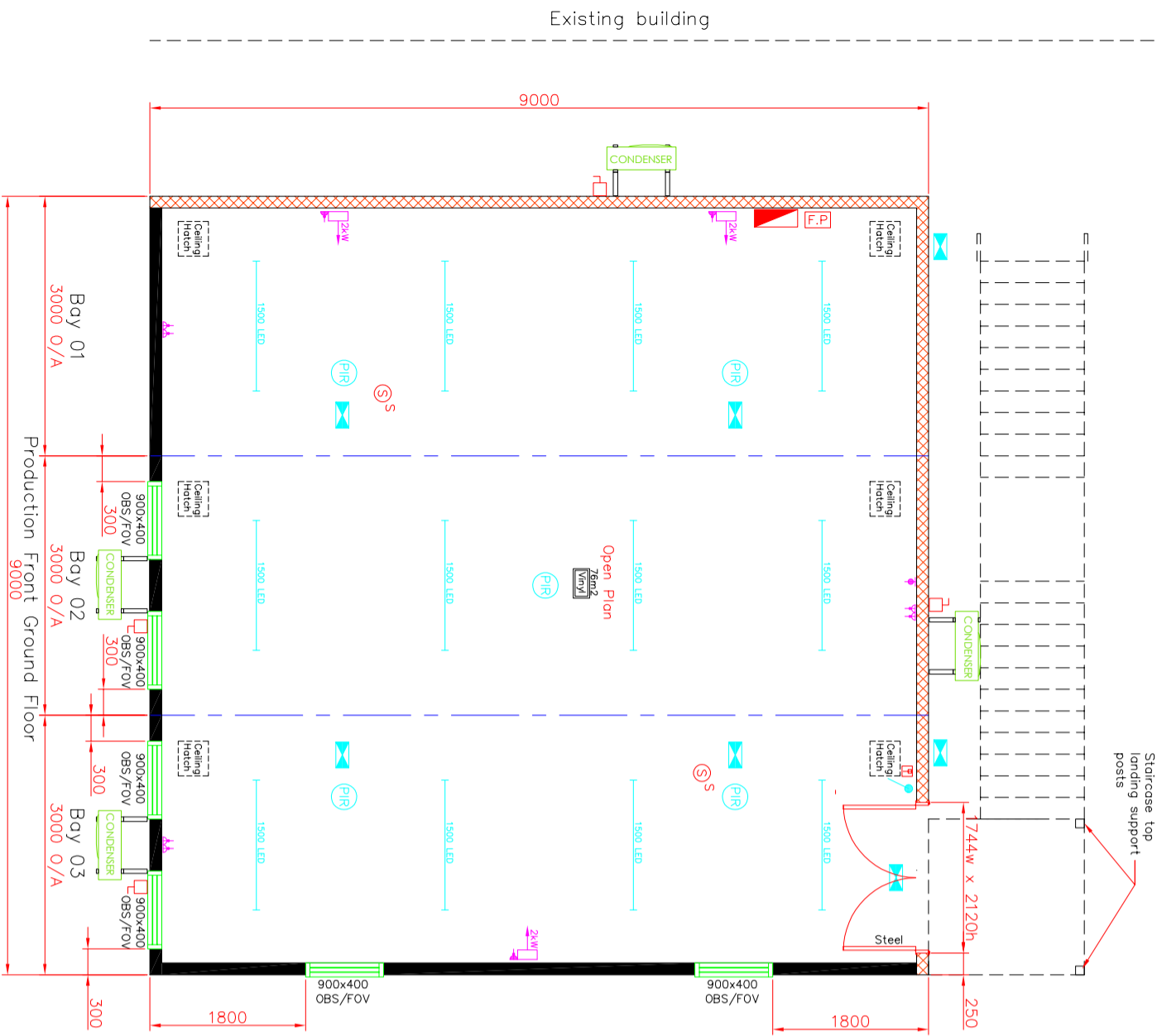


Existing building



Key: Lights & Switching

- Wall switch
- Emergency lighting
- 1500mm LED light fitting
- PIR motion detector
- PIR motion detector
- 2xw fan heater
- Thermostat
- Key: Water Heaters
 - Under sink water storage heater size as dwg
 - Over sink tea boiler

Key: Mains, Power & Ventilation

- Mains distribution Board
- Wall fan size stated & fused spur
- Double switched socket outlet low level.
- Double switched socket outlet above worktop.
- Double switched socket outlet trunking mounted.
- Un-switched fused spur outlet
- Double data back box only (cabling by others)
- 3 compartment trunking 780mm to underside c/w sockets & data outlets

Key: Fire alarm (BS 5839 pt 2)

- File alarm panel
- Smoke detector c/w sounder
- Head detector
- Breck glass cdl point
- 60 mins fire rating both ways
- 60 mins inside to outside

NOTES

By	Date	Rev
MJC	18.03.22	A
MJC	22.04.22	B

Drawing changed to suit discussion on site
 Drawing changed to suit clients sketch & production details added

Quote Ref: Q3459

Project: Site Accommodation

Title: Plan Layout

Drawn: MJC Date: 03/03/2022

Scale: 1:75 Drawing Size: A3

Drawing Approval
 Signed: _____
 Date: _____


 EXCEL MODULAR BUILDINGS
 Drawing number: EMB5580-01 Issue: B