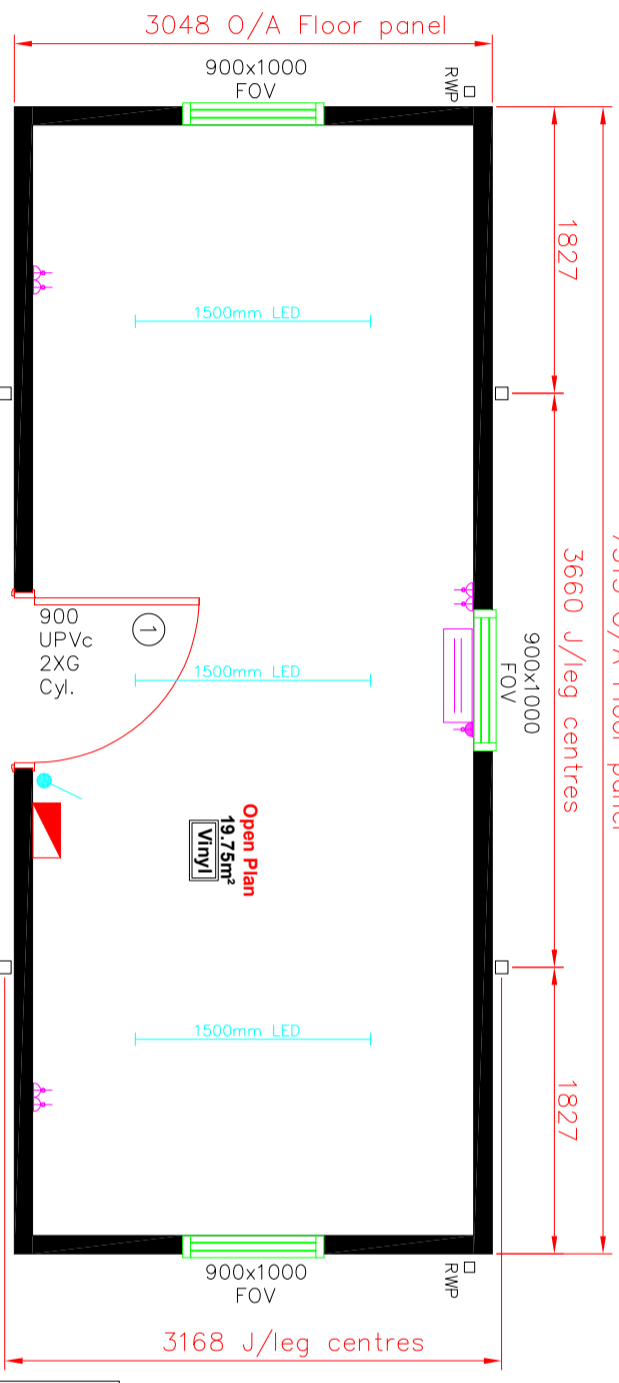
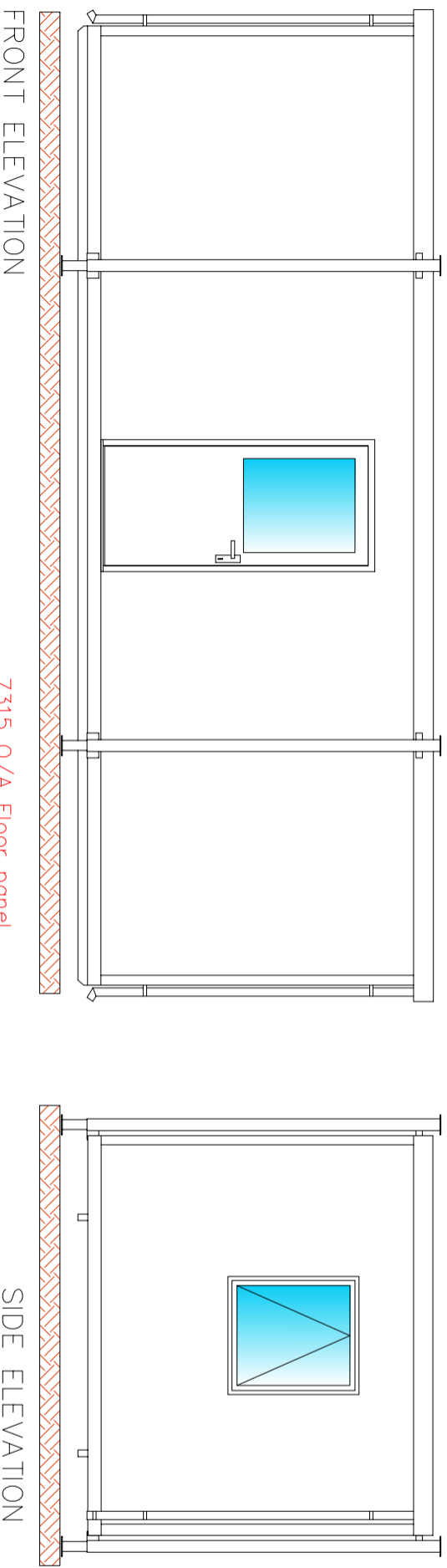


NOTES



24'x10'

**Key:**

- Mains distribution Board
- Double switched socket outlet low level. 500mm to ci unless stated otherwise
- 1500mm LED Light fittings
- 2kW panel heaters

- Colours & finishes**
- = Main Body Plastisol Goosewing grey 10A05
  - = External Door White UPVc
  - = Fascia Plastisol Merlin grey 18B25
  - = Corners Plastisol Merlin grey 18B25
  - = Jackleg colours Painted Merlin grey 18B25
  - = Floor Covering Vinyl flooring – Grey
  - = Rainwater Goods White square
  - = Windows White UPVc
  - = Internal Wall White vinyl faced plasterboard
  - = Internal Ceiling White vinyl faced plasterboard
  - = Internal skirting White 2 part plastic

**Sizes & Heights**

Ceiling Height = 2250mm

By	Date	Rev
Client		
Project		
Title Plan Layout 24'x10'		
Drawn: MJC	Date 13/04/2018	
Scale: 1:50	Drawing Size A3	

**EXCEL**  
MODULAR  
BUILDINGS

Drawing number EMB5544-01 Issue